

# CHORTAU

## 1080P FULL HD WiFi Dash Camera User Manual

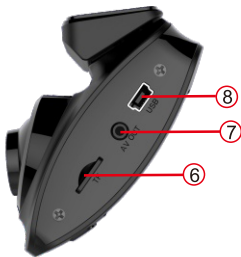


B-T007

## Important Notice:

- This product is intended for use in motor vehicle only. Do NOT install the camera where it might block the driver's view of road (including the mirrors) or the deployment of the airbag.
- Before using this camera, please insert the memory card first, and format the memory card in camera menu first.
- This camera records video at high resolution, Be sure to use high speed Micro SD card, Class 10 or above is recommended, 16GB or 32GB cards are recommended.
- For safety reasons, this camera has a small built-in battery, It's used only for saving the video file after external power supply cuts off (car turns off).
- Be sure the camera lens is clean and there is nothing blocking the lens.
- DO NOT leave the camera in direct sunlight for a long period of time or where the temperature could go above 170°F(75°C).

# Interface and Button Function





1.Mode and Menu Button

3.Power Button

5.OK Button

7.AV Port

9.Speaker

11.Reset Button

2.Up Button

4.Down Button

6.Micro SD Card Slot

8.Mini USB Port

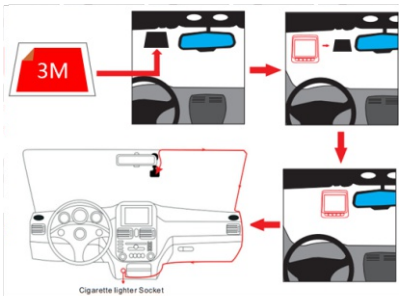
10.Lens

<b>MODE&amp; MENU</b>	<p><b>MENU</b> : In Video / Photo / playback mode, short press to access the menu settings for that particular mode, and press twice to access System Setting Menu.</p> <p><b>MODE</b> : In standby, long press (2 seconds) to switch mode between Video / Photo / Playback.</p>
<b>UP</b>	<p>In Photo Mode, short press to ZOOM in.</p> <p>In Setting Menu. Short press to select option and adjust values.</p> <p>In Playback, short press to select media files.</p>
<b>Power</b>	<p>When power off, Press &amp; Hold to turn on the camera.</p> <p>In any status, Press &amp; Hold to turn off the camera.</p> <p>During video recording, short press to turn off the screen, access screen saver mode (Camera is still recording).</p>
<b>DOWN</b>	<p>In Photo Mode, short press to ZOOM out.</p> <p>In Setting Menu, Short press to select option and adjust values.</p> <p>In Playback, short press to select media files.</p>

<p><b>OK</b></p>	<p>In Standby / Video / Photo Mode. Short press to start /stop video recording / take photo.</p> <p>In Setting Menu. Short press to confirm selection and adjustment.</p> <p>In Playback, short press to start/stop playing.</p>
------------------	--

Standby: The camera is on, and no recording or pl-aying in progress.

## Set up and Installation:



1. Use the suction cup mount / 3M sticker mount to install the dash cam on the windshield, recommended place near the rearview mirror facing front, adjust the lens angle for best coverage.
2. Plug the included power adapter into the car cigarette lighter socket, the indicator will light up meaning power is on.
3. Connect the power adapter and the dash cam, and route the excess cable alongside the interior trim for better looking.

## **Operating Mode:**

The camera operates in 3 modes: Video Recording Mode, Photo Mode and Playback Mode, These modes also have menu to help you configure recording and taking photos.

Long press “M” button to switch between different modes and access the mode you want. Watch the icon on top left corner of the screen for each mode.

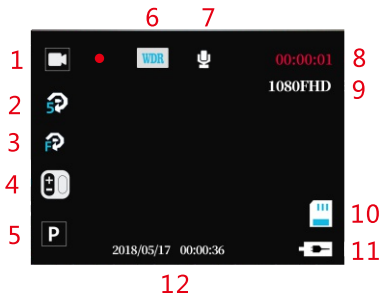
### **A. Video Recording Mode:**

The camera will automatically enter Video Recording Mode and start recording when connected to a car charger and power on.

A Red dot flashing on the top left corner indicates

recording is in progress. Press the “OK” button to stop recording, or start recording again.

## 1)Video Recording Mode Interface



- |                           |                          |
|---------------------------|--------------------------|
| 1.Video Mode Icone        | 2.Loop Recording Status  |
| 3.Motion Detection Status |                          |
| 4.Exposure Value          | 5.Parking Monitor Status |
| 6.WDR Status              | 7.Audio Recording Status |
| 8.Recording Time          | 9.Resolution             |
| 10.Memory Card Status     | 11.Power Status          |
| 12.Date and Time          |                          |



In all 3 operating mode, you can press the “M” button once to access the menu settings for that particular mode, and press twice to display System Setting Menu.

Press ▲ and ▼ to scroll through the various settings and press OK to select, Press “M” button again to exit the setting menu.

## 2)Video Recording Menu :

In standby mode, press the “M” button to enter the setting menu of video recording mode, press the “M” button twice to enter the system setting menu.



**Resolution** : Adjust recording video resolution, 1080FHD 1920\*1080; 720P 1280\*720; WVGA 848\*480; VGA 640\*480.

**Loop Recording** : This function allows you to set video file length to 3/5/10 minutes, select a value to activate loop recording, so when storage fills up, it will automatically loop back to the earliest file and record over it.

**WDR** (Wide Dynamic Range) : Turn on to optimize video quality with wider light range and image detail.

**Exposure** : Adjust the value to get better brightness sensitivity.

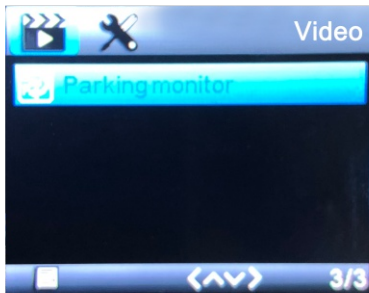


**Motion Detection:** This function allows the camera to start recording when it detects movement.

**Audio:** Turn ON / OFF audio recording in video.

**Date Stamp :** Enable/Disable the date and time marks in video files.

**G-Sensor :** High / Medium / Low / Off.



**Parking monitor :** It's used to protect your car after parking, with this function on, after you stop the car and the camera powers off, it will stay in standby, when camera detects shocking, it will automatically turn on and take a 30 seconds video, then shut down automatically. The sensor sensitivity can be adjusted to Low /Medium / High.

## B.Photo Taking Mode

The dash cam can operate in Photo Taking Mode, and take HD photo up 3 Mega pixels.

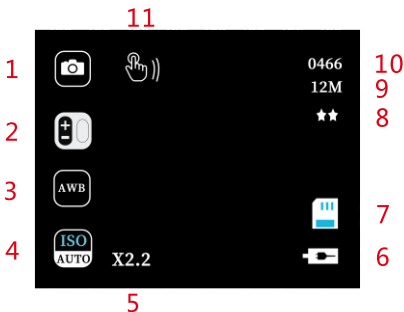
To Take a Photo:

Simply power on the dash cam, long press “M” button to select Photo Mode, and press “OK” to take a photo.

Like the video recording mode, you can short press the “M” button once to access the setting menu for photo mode.

Press “M” button twice to display System Setting Menu.

### 1)Photo Taking Mode Interface :



- |                            |                  |
|----------------------------|------------------|
| 1.Photo Taking Mode Icon   | 2.Exposure Value |
| 3.White Balance            | 4.ISO            |
| 5.Focal length             | 6.Power Status   |
| 7.Memory Card Status       | 8.Photo Quality  |
| 9.Photo Resolution         |                  |
| 10.Remaining Photo Storage | 11.Anti-Shaking  |

## 2)Menu of Photo Taking Mode :

In standby mode, press the “M” button to enter the setting menu of photo mode, press the “M” button twice to enter the system setting menu.

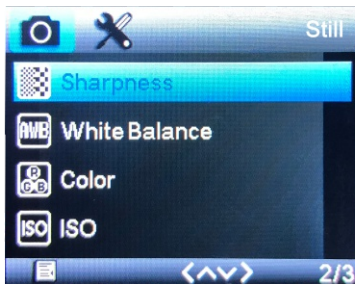


**Capture Mode :** Sets the time delay for capturing an image. For example, if you select 2 seconds, then 2 seconds after you press OK, a picture will be captured. Single / 2S Timer / 5S Timer / 10S Timer.

**Resolution :** Set the photo resolution, 12M 4032\*3024 / 10M 3648\*2736 / 8M 3264\*2448 / 5M 2592\*1944 / 3M 2048\*1536 / 2MHD 1920\*1080 / VGA 640\*480 / 1.3M 1280\*960.

**Sequence:** Turn ON / OFF five continuous shooting.

**Quality :** Defines the quality of image you capture, Fine / Normal / Economy.



**Sharpness** : Defines the clarity of details in the photos, Optional: Strong / Normal / Soft.

**White Balance** : Establishes the condition to capture an image based on the option given. Optional: Auto / Daylight / Cloudy / Tungsten / Fluorescent.

**Color** : Adjust Photo Color. Optional: Normal / B&W / Sepia.

**ISO** : Auto / 100 / 200 / 400.



**Exposure** : Adjust exposure value to adjust the brightness of the photo.

**Anti-Shaking** : Turn ON/OFF image stabilization function.

**Quick Review** : Sets time duration the photo displays on screen after it has been captured.

**Date Stamp :** Enable/Disable the date and time marks on photo.

## **C.Playback Mode:**

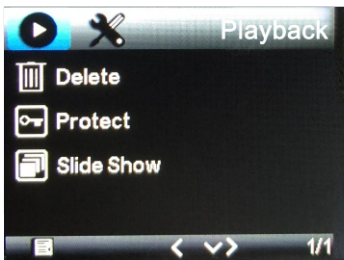
This mode allows you to playback recording video or view photos.

1.Stop video recording, and long press “M” button twice to enter Playback Mode. (Recording Mode - Photo Mode - Playback Mode)

2.Use ▲ and ▼ to scroll through the recorded files / photos, and press OK to view recorded video.

### **1) Playback Menu:**

In standby mode, press the “M” button to enter the setting menu of playback mode, press the “M” button twice to enter the system setting menu.






**Delete:** Delete the current file displayed or delete all files.

**Protect:** Lock / Unlock the current file displayed or Lock / Unlock all files.

**Slide Show :** 2 Seconds / 5 Seconds / 8 Seconds.

## D.System Setting Menu:

Press “M” button twice to access System Setting Menu in any mode. The icon  is highlighted in the upper left corner.



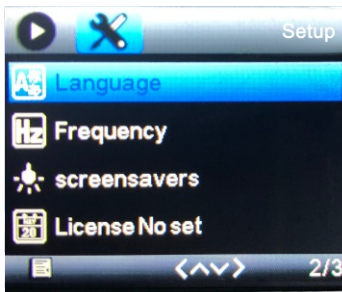
**WiFi :** Turn ON/OFF WiFi connectivity.

**Date/Time :** Change the time and date by using the ▲ and ▼ , then press OK to confirm.

**Auto Power Off :** Set the time for the camera to

automatically power to save energy, after the camera is idle for set time, it will power off. Off / 3 Minute / 5 Minutes / 10 Minutes.

**Beep Sound :** Turn on sounds when you press any buttons.

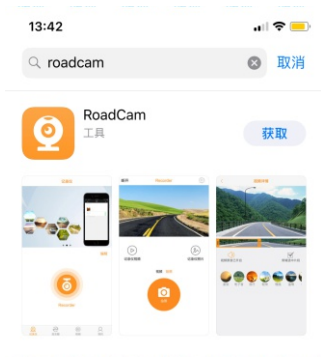


**Language :** English/French/ Spanish/ Portuguese / German/ Italian/Japanese /Chinese.

**Frequency :** Set light frequency to 50Hz or 60Hz, and press OK.

**Screen Saver :** Set the time to automatically turn off the LCD display after no operation. Off/1 Minute / 3 Minutes / 5 Minutes .

**Licence No set :** Set the license No.



Android



IOS



**Format** : Format the Micro SD Card.

**Default Setting** : Reset all settings back to factory default.

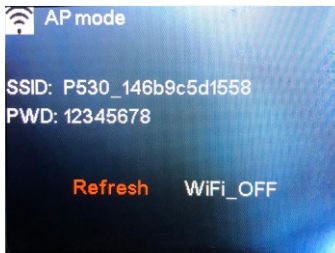
**Version** : Check firmware version.

## **E.WiFi Connection :**

1)Download APP :

Search and install the APP “RoadCam” on your smart phone, you can search this APP in Google Play Store for Android phones, or in APP Store for iPhones, there is QR code for them :

2) Turn on the WiFi function in the setting menu of camera, the screen will show the following image :



3)Find the WiFi hotspot named SSID : P530\_\*\*\*\*\* which shows on the screen in your phone“WiFi”list. Choose and enter the passw-ord (the default password is 12345678), and then wait for connection.



14:15



Enter the password for "P530\_146b9c5d1558"

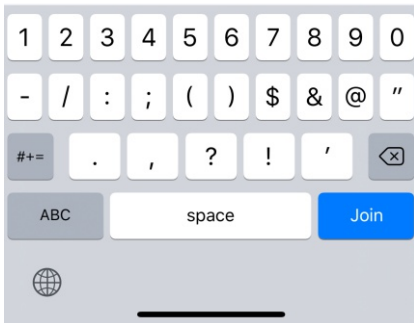
[Cancel](#)

**Enter Password**

[Join](#)

Password    ●●●●●●●8

You can also access this Wi-Fi network by bringing your iPhone near any iPhone, iPad or Mac that has connected to this network and has you in its contacts.



4)When the screen of camera shows “MAC: \*\*\*\*\*”, it indicates that the phone has connected to the machine successfully.



5)Open “RoadCam” on the phone, enter and press “Add Recorder”, The APP will detect the connected camera automatically, then you can operate the camera on your smart phone or download videos.



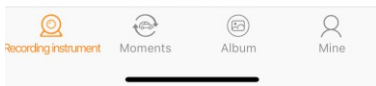
14:21

4G

## Recording instrument



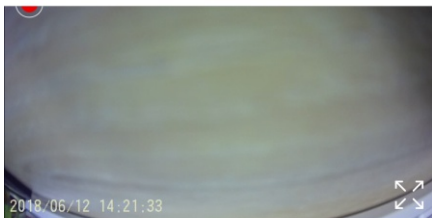
## Add Recorder



14:21



Break off **P530\_146b9c5d1558**



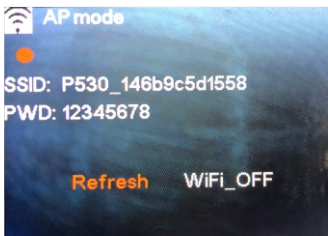
HUD video



HUD photo



**Please Note :** When the wifi connection is successful, the screen of camera will show the following image, you can only set the camera by APP “RoadCam”. If you want to set the camera via the buttons, please switch off the wifi function.



## Specification:

Model	CHORTAU B-T007
Image Sensor	High Resolution SONY Sensor
Screen	2 inch LCD Display
Lens	170°High-Resolution Wide Angle Lens
Video Resolution	1920*1080P / 1280*720P / 848*480

Video Format	MOV
Video Coding	H.264
Video Mode	Normal / Loop Record /Motion Detection/Parking Monitor
Picture Format	JPEG
Photo Resolution	12MP/10MP/8MP/5MP/3MP / 2MP / 1.3MP / VGA
Loop Recording	3/ 5/10 minutes
WiFi	Supported
Power on recording	Supported
WDR	Supported
G-Sensor Lock	Supported
Language	English/French/ Spanish/ Portuguese/ German/ Italian/ Japanese/Chinese
Audio Recording	Built-in microphone, On / Off optional
Storage	Micro SD Card (up to 32GB)
USB interface	Mini USB
Operating System	Windows 7/10 or MAC
Internal Power	Built-in Li-ion Battery
External power supply	DV 5V / 2A
Storage temperature	-10°C~70°C
Operating temperature	-10°C~60°C

## Common Problems and Solutions:

1. The dash cam will stop automatically when recording.

### **Solution:**

- (1) Check whether the memory is full.
- (2) Check whether the loop recording function of the dash cam is working.
- (3) Check whether the Micro SD card is high-speed above C10.
- (4) Check the memory card, there might be too many locked video that the loop recording won't work right.

2. If the video played on the computer is somehow not fluent or jammed. There might be some problem with the memory card.

### **Solution:**

- (1) Format your Micro SD card in the camera.
- (2) Change one high quality card

3. The WiFi does not connect.

### **Solution:**

- (1) Reset the camera.

(2) Turn off the WiFi on your smart phone and turn on again.

(3) Forget the WiFi password and reconnect again.

4. There are stripes interference in the image. There should be wrong light frequency.

**Solution:**

According to the local main frequency, make the appropriate settings 50HZ or 60HZ.

5. When the video play on your computer, the video will pause. Or the video mode is not compatible with the player.

**Solution:**

(1) The Micro SD card does not suit for this dash camera, please try with another memory card.

(2) Use some other media player.

6. Without external power supply, the camera only lasts very short time, or it just can't turn on.

**Solution :**

The built-in battery is very small for safety reasons, not designed to work alone, so please keep it connected to external power supply.

If you have any other questions or problems, please feel free to contact us at [support@chortau.cc](mailto:support@chortau.cc) . We have professional team at your service, and your satisfaction is guaranteed.